

Artificial Intelligence: An Introduction to Usage in the Workplace

Presented by **Aaron Gunderson, COO**



BAY VALLEY TECH

www.bayvalleytech.com



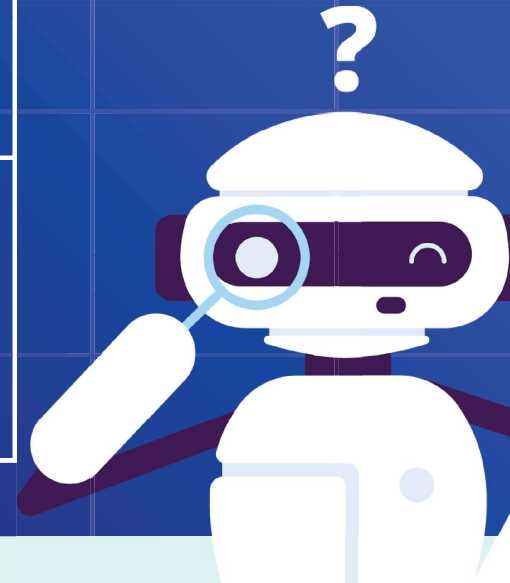
AI: What is it?

- **Simple Definition:** Software that simulates human intelligence to solve problems and generate new content (like text, summaries, or financial models).
- **How it works (for us):** It uses massive datasets to find patterns, and we use those patterns to speed up our workflow.



Pros and Cons of AI

Type of AI	Usage	Pros	Cons
General LLM (ChatGPT, Gemini, Claude)	Drafting emails, summarizing research	Versatile, Free/Low-Cost	High hallucination Risk, data privacy concerns
Specialized AI (CoCounsel, Casetext)	Legal research, tax modeling	Higher accuracy, Vetted data sets	Subscription cost, limited scope



The Opportunity

**AI Augments, It
Doesn't Replace**

**Key Efficiency
Drivers:**

- Speed
- Accuracy
- Scalability

**Focus on
Strategy: Shift
your time from
low-value data
tasks to high-
value client
judgment**

